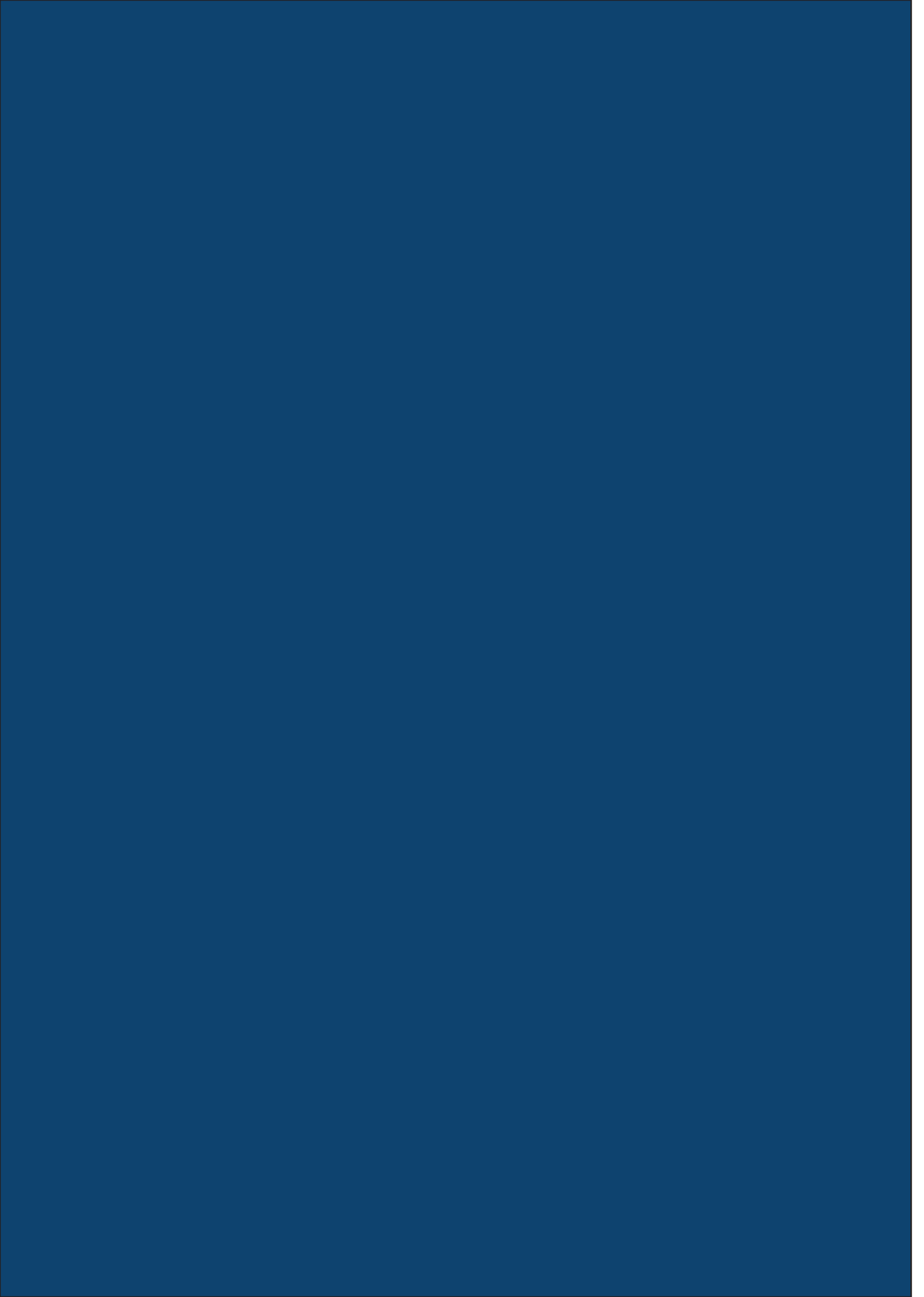


1964



**KAPTAN
GROUP**
TURKEY







AGENDA 2016 AJANDA



50 YEARS

KAPTAN GROUP



IRON and STEEL

Kaptan Demir Çelik
Kaptan Metal
Çebi Metal



LOGISTICS

Martaş Liman
Martaş RO-RO
Çebi Depolama
Çebi Trans



SHIPPING

Nur Gemicilik
Çebi Denizcilik
Tayfun Gemi İşletmeciliği
Çebi Gemi İşletmeciliği



SHIPYARD

Trabzon Çebi Tersanesi



ENERGY

Çebi Enerji



RECYCLING

Kaptan Geri Dönüşüm



MINING

Aset Madencilik
Damla Madencilik

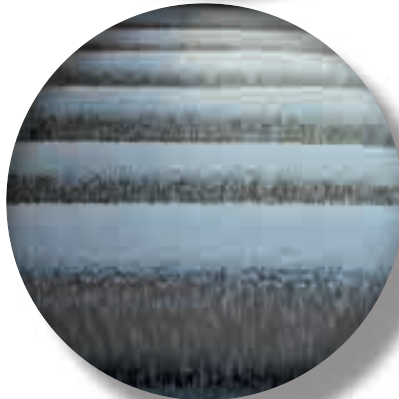
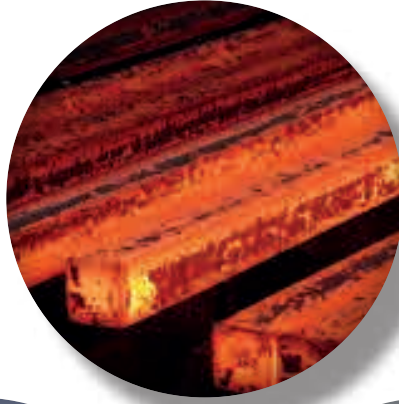


INVESTMENT

KAPTAN GROUP

From the company's initial step to the present, Kaptan has continued growing through investments in the fields of steel-iron, shipping, port operations, transportation, energy, mining, recycling, and shipbuilding. The Kaptan Group has contributed to the Turkish economy through its remarkable experience over the past five decades.







5 YEAR
S



KAPTAN GROUP

Our Vision



Our vision is to become a worldwide brand through the services and quality we offer our customers in the fields where we have accumulated notable experience.



Our Mission



In addition to our vision, our mission is to constantly ameliorate and expand:



to continuously grow through investment;

to train and further develop our employees' skills;

to establish socially responsible projects for the environment and society;



to strengthen our quality through the interconnection of technology and people;



to continuously develop and thereby achieve the highest customer satisfaction.



Our Quality Policy

Our quality policy, founded on our vision and mission, is to advance our production while simultaneously improving our quality by means of our integrated management systems, measuring our company via world standards that we expect not only to reach but also to maintain:

- ISO 9001- Quality management system
- ISO 14001- Environmental management system
- OHSAS 18001- Occupational health & safety management system
- Management of sustainability of supply from responsible sources.

Timely and high quality services



KAPTAN DEMİR ÇELİK

3 million tons

Having established the rolling plant in Karabük, Turkey, in 1964, the Kaptan Steel & Iron Company has continued growing through its investments in the Thrace region.

As the first and only steel plant in the Thrace Region, the Kaptan Steel & Iron Plant provides its customers the advantages offered by its location, only 5 km to the main highway and 7 km to the Martaş Port, as the most convenient and easily accessible facility in the area.

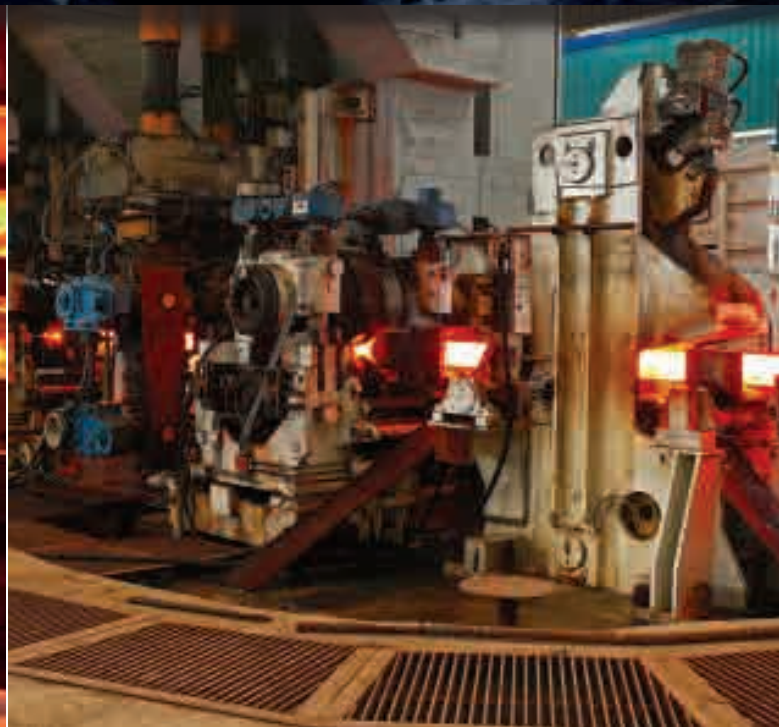


of steel-iron production

The Çorlu Rolling Plant, currently capable of manufacturing 600.000 tons/year of reinforcing bars for the construction industry, started its production operations in 1991. Its advanced technology has been completely upgraded and production capacity was increased in 2014 to demonstrate and promote the spectacular capabilities and output of the Plant.

Moreover, the steel plant located in Marmara Ereğli, currently capable of producing 1.400.000 tons/year of steel billets, started its operations in 2002 and continues to fully function under the best conditions. The oxygen plant commissioned in 2003, within the steel plant, produces gas oxygen, liquid oxygen, and liquid argon. Furthermore, any surplus stock is sold to the market.

The Marmara Ereğli rolling plant, where the billets produced in the mill are loaded into the heating furnace while they are still hot and each phase of production is performed by an automated system, was commissioned in 2006. The rolling mill producing raw materials for the steel plant currently has an annual production capacity of 1.000.000 tons.





KAPTAN METAL, ÇEBİ METAL



EXPOR





World's preference: Kaptan steel&iron

The products manufactured by Kaptan Steel & Iron are sold in the international market by Kaptan Metal and in the domestic market by Çebi Metal.

Having been awarded the **Export Stars** Award numerous times by breaking export records with its remarkable customer portfolio and notable sales figures, Kaptan Metal was incorporated in 1983. Kaptan Metal exports products to over 100 countries worldwide; particularly to European countries, as well as to the Middle Eastern, African, Black Sea, and Balkan states and to the U.S.

Having operated as a semi-finished products supplier since 1983, Çebi Metal is preferred by domestic customers because of its sales and after-sales support services in addition to its recognition as a global market leader in the industry.

KPT

Demir Çelik; Certificates



KAPTAN DEMİRÇELİK
İNŞAAT VE TİCARİT A.Ş.
MÜHÜRLEME - DENETİM
T.C. İNŞAAT VE TİCARİT BAKANLIĞI
19 Şubat 1987
MÜHÜRLEME ŞİRKETİ
NEVİSİ
KODU
1600000000
11023616

KAPTAN DEMİRÇELİK
İNŞAAT VE TİCARİT A.Ş.
MÜHÜRLEME - DENETİM
T.C. İNŞAAT VE TİCARİT BAKANLIĞI
19 Şubat 1987
MÜHÜRLEME ŞİRKETİ
NEVİSİ
KODU
1600000000
11023616

APPROVED
by **ENTIRE WORLD**



Our System Certificates

ISO 9001 : 2008, Quality Management System Certification
ACCREDITED by UKAS-ANAB-DAR-TURKAK

ISO 14001 : 2004 Environmental Management System Certification
ACCREDITED by UKAS

OHSAS 18001 : 2007
Occupational Health and Safety Management System Certification
ACCREDITED by UKAS



Our Product Certificates

Country	Standard	Quality
TURKEY	TS 708 : 2010, Reinforcing Steel Bars TS 9914, Steel Billets TS EN 10059, Squares	S420-B420B-B420C-B500B-B500C S235JR – S275JR
CE Marking	Merchant Bars, Square Steel Bars, Steel Equal Angles, Flat Steel Bars, Round Bars, IPN, UPN	S235JR – S275JR
GERMANY	DIN 488-2009	B500B
U.K. Cares	BS 4449 : 1997 BS 4449 : 2005	Gr 460B B500B – B500C
BULGARIA	BDS 9252:2007	B500B
FRANCE	NF A35-080-1	B500B
SPAIN	UNE 36740	B500S – B500SD
COLOMBIA	NTC 2289	GRADO 420
COSTA RICA	INTE 06-09 : 01 / ASTM A 615 INTE 06-09 : 02 / ASTM A 706	GRADO 40 – GRADO 60S GRADO 60W
NORWAY	NV A - NV B - NV A36	
PARAGUAY	PNA 4 007 99	AP 320 DN AP 400 DN AP 420 DN AP 500 DN
ROMANIA	SR 438-1 : 2012	PC 52

• Our quality certificates are available at www.kaptangrupturkiye.com





Demir Çelik; Products



Flat Steel Bars

Steel Qualities

DIN 17100 ST 37.2
 ASTM A36
 ASTM A529-GR50
 FE 360 B
 S235 JR (EN 10025)
 S275 JR (EN 10025)

Lengths

4.0-12.0 Meters
 20, 30, 40 Feet

Size MM	Thickness	Size Inches	Thickness
10	4.0-6.0	7/16	3/16
12	3.0-10.0	1/2	1/8-3/8
14	3.0-10.0	5/8	1/8-3/8
16	2.5-10.0	3/4	1/8-3/8
18	2.5-10.0	7/8	1/8-3/8
20	2.5-10.0	1	1/8-3/8
25	2.5-18.0	1 1/4	1/8-3/4
28	3.0-18.0	1 1/2	1/8-3/4
30	3.0-18.0	1 3/4	1/8-3/4
35	3.0-20.0	2	1/8-3/4
38	3.0-20.0	2 1/2	1/4-1
40	3.0-30.0	3	1/4-1
45	3.0-20.0	3 1/2	1/4-1
50	3.0-25.0	4	1/4-1
55	6.0-25.0		
60	6.0-25.0		
63	6.0-25.0		
65	6.0-25.0		
70	6.0-25.0		
75	6.0-25.0		
76	6.0-25.0		
80	6.0-25.0		
85	6.0-25.0		
88	6.0-25.0		
90	6.0-25.0		
95	6.0-25.0		
100	6.0-25.0		
120	8.0-12.0		
150	8.0-25.0		



Steel Equal Angles

Steel Qualities

DIN 17100 ST 37.2
 ASTM A36
 ASTM A529-GR50
 FE 360 B
 S235 JR (EN 10025)
 S275 JR (EN 10025)
 S355 JR (EN 10025)

Lengths

SS 400
 RST 44-2
 ST 52-3
 ST 50-2

Lengths

6.0-12.0 Meters
 20, 30, 40 Feet

Size MM	Thickness	Size Inches	Thickness
20x20	2.5-4.0	3/4x3/4	1/8
25x25	2.5-6.0	1x1	1/8-1/4
30x30	2.5-6.0	1 1/4x1 1/4	1/8-1/4
35x35	2.5-6.0	1 1/2x1 1/2	1/8-1/4
38x38	2.5-6.0	1 3/4x1 3/4	1/8-1/4
40x40	3.0-6.0	2x2	1/8-3/8
45x45	3.0-6.0	2 1/2x2	3/16-3/8
50x50	3.0-9.0	3x3	3/16-3/8
60x60	4.0-8.0	3 1/2x3 1/2	1/4-3/8
65x65	4.5-8.0	4x4	5/16-1/2
70x70	5.0-9.0		
75x75	5.0-9.0		
80x80	6.0-10.0		
90x90	7.0-10.0		
100x100	7.0-12.0		
110x110	10.0-12.0		
120x120	10.0-12.0		
130x130	10.0-15.0		
150x150	12.0-16.0		



Square Steel Bars

Steel Qualities

DIN 17100 ST 37.2
 ASTM A36 SAE 1008
 ASTM A529-GR50 SAE 1010
 FE 360 B SAE 1015
 S235 JR (EN 10025) SAE 1020
 S275 JR (EN 10025) SAE 1025
 S355 JR (EN 10025) SAE 1030
 SS 400 CK 15 SAE 1035
 RST 44-2 CK 30 SAE 1040
 ST 52-3 CK 45 SAE 1045
 ST 50-2 CK 60 SAE 1050
 ST 60-2 SAE 1060
 ST 70-2

Lengths

4.0-12.0 Meters
 20, 30, 40 Feet

Size MM	Size Inches
6x6	1/4x1/4
8x8	5/16x5/16
10x10	3/8x3/8
12x12	7/16x7/16
14x14	1/2x1/2
16x16	5/8x5/8
18x18	3/4x3/4
20x20	7/8x7/8
22x22	1x1
25x25	1 1/4x1 1/4
30x30	1 1/2x1 1/2
32x32	1 3/4x1 3/4
35x35	2x2
40x40	2 3/8
45x45	2 3/4
50x50	3 1/8
60x60	
70x70	
80x80	

UPN&IPN

Steel Qualities

DIN 17100 ST 37.2
 ASTM A36
 S235 JR (EN 10025)
 S275 JR (EN 10025)
 RST 44-2

Lengths

6.0-12.0 Meters

IPN	UPN
Size MM	Size MM
40	40
50	50
60	60
65	65
80	80
100	100
120	120
140	140
160	160
180	180
200	200





P. Round Bars

Steel Qualities

DIN 17100 ST 37.2	
ASTM A36	SAE 1008
ASTM A529-GR50	SAE 1010
FE 360 B	SAE 1015
S235 JR (EN 10025)	SAE 1020
S275 JR (EN 10025)	SAE 1025
S355 JR (EN 10025)	SAE 1030
SS 400 CK 15	SAE 1035
RST 44-2 CK 30	SAE 1040
ST 52-3 CK 45	SAE 1045
ST 50-2 CK 60	SAE 1050
ST 60-2	SAE 1060
ST 70-2	

Lengths

3.0-12.0 Meters	
20, 30, 40 Feet	

Size MM Size Inches

6	1/4
6.5	5/16
8	3/8
10	1/2
12	5/8
14	3/4
16	7/8
18	1
20	1 1/4
22	1 1/2
25	1 3/4
26	2
28	2 3/8
30	2 3/4
32	3 1/8
35	3 1/2
38	4
40	
45	
50	
60	
70	
80	
90	
100	
120	



Steel Billets

Steel Qualities

ASTM A 615	EN 10025
GR 40-GR60	S235JR – St 37-2
GR75-GR 80	
	S355JR – St 52-3
SAE J 403	S275JR – St 44-2
1008	E295 – St 50-2
1010	E335 – St 60-2
1015	E360 – St 70-2
1025	BS 4449
1030	GR 460B – B500B
1035	GR 460B – B500C
1040	Ck 15
1045	Ck 30
1050	Ck 45
1060	Ck 60
1070	55Cr3
	41Cr4
ASTM A 706	50CrV4
GR60-GR 80	51CrMoV4
	60SiMn5
ASTM A 572	SAE 4140
GR 50	SAE 5140
	SAE 5160
GOST 380 3SP	BD 90
GOST 380 5SP	NVA-NVB-NVA36
	SR438:2012 PC52

Lengths

6.0-15.0 Meters	(+/- 100MM)
-----------------	-------------

Size MM

100X100	
120X120	
130X130	
140X140	
150X150	
160X160	
200X200	

T Bars

Steel Qualities

DIN 17100 ST 37.2
S235 JR (EN 10025)
S275 JR (EN 10025)

Lengths

6.0 Meters

Size MM Size MM

25	2.5-3.0
30	2.5-4.0
35	2.5-4.0
40	3.0-4.0
50	4.0-6.0



Reinforcing Steel Bars

Steel Qualities

ASTM A 615 GR40	PNA 4 007 99 AP 320 DN
ASTM A 615 GR60	PNA 4 007 99 AP 400 DN
ASTM A 615 GR75	PNA 4 007 99 AP 420 DN
ASTM A 615 GR80	PNA 4 007 99 AP 500 DN
ASTM A 706 GR60	INTE 06-09:01 / ASTM A
	615 GRADO 40 – GRADO
ASTM A 706 GR80	INTE 06-09:02 / ASTM A
	706 GRADO 60W
TS708 S420	UNE 36740 B500S –
TS708 B420B	NTC 2289 GRADO 420
TS708 B420C	CAN/CSA – G30.18-M92
TS708 B500B	JS 33 GR 300
TS708 B500C	JS 33 GR 400
BS 4449:97 GR 460B	ABNT 7480 CA 50
BS 4449:05 B500B	ASNZS 4671 500N
BS 4449:05 B500C	ES ISO 6935 B500BWR
NF A35-080-1 B500B	Gost52544 A500C
DIN 488:2009 B500B	JIS G3112 2004 SD295A
SR 438:2012 PC 52	JIS G3112 2004 SD390
BDS 9252:2007 B500B	NT 26.05 RB400W
IS:1786 Fe 415	NTE INEN 102 GRADE A42
ASTM A572 Grade 50	NCh 204-2006 A630-420H
STO ASChM 7-93 A500S	COVENIN 316-2000 W60
SI 4466 Part 3 S 400W	COVENIN 316-2000 S60
AASHTO M 31M	GB 1499-1998 HRB 500
UNE 36068 B400S	ELOT 1421-3 B500C
SANS 920:2005 Grade	LNEC E449 : 2010 A400NR
	LNEC E450 : 2010 A500NR

Lengths

6.0-18.0 Meters	
-----------------	--

Size MM Size MM

8	5/16
10	3/8
12	1/2
14	5/8
16	3/4
18	7/8
20	1
22	1 1/4
25	1 1/2
26	1 3/4
28	2
30	
32	
35	
38	
40	
50	

• Intermediate sizes may be produced under the approval of the factory upon request.



Kaptan Logistics provides effective & reliable services in the fields of

port operations, RO-RO, warehousing
and land&sea transportation.





MARTAŞ LİMAN

The first private sector port in the Thrace region

Established in Marmara Ereğli region of the Tekirdağ province in 1993, the Martaş Port is located on the Northern coast of the Sea of Marmara and is 48 miles to the west of Istanbul.



Lat. 40° 57' N
Long. 27° 55' E



The port facility, having an annual cargo loading and discharging capacity of six million tons, provides services using the modern bulk and mixed cargo handling equipment required by present port operations as well as general warehousing services.

Located close to the highways and industrial zones enabling it to be reached quickly, the Martaş Port has piers with maximum depths of 25 meters and lengths of 30 meters, allowing vessels up to 120.000 dwt to berth.

Moreover, providing services with the RO-RO ramps for RO-RO transportation, Martaş Port is used by NATO and naval ships as well. The utilization of the port by international organizations and governmental and military forces reflects the significance and the magnitude of the site.





MARTAŞ LİMAN



KAPTAN ÇEBİ
TEKİRDAĞ

Modern port operations, effective services

Complying with the ISPS Code, the Martaş Port facility is capable of loading, unloading, and handling various cargoes swiftly (*bulk, liquid, solid, and general and project cargoes*), using modern and high-capacity equipment operated by specialized machine operators highly experienced in their fields, and demonstrating the best quality service.

A large portion of the non-hazardous liquid and chemical cargoes from the Thrace region is handled by the Martaş Port, which holds a license issued by the Ministry of Transport, Maritime Affairs, and Communications.

The Martaş Port provides 24/7 uninterrupted pilotage and tugboat service by experienced pilots in line with national and international guidelines. Moreover, the port provides warehousing, dispatching, and lashing services at its Type-A warehouse with open and covered storage areas, enabling everyone to utilize every potential service offered by this well-organized and meticulously executed facility.

Furthermore, the waste collection facility located within the port area collects bilge, waste, oil, sludge, wastewater, and garbage in accordance with the MARPOL rules, which are closely attended to by the entire group of companies to achieve and maintain the sustainability policy.





MARTAŞ LİMAN



MARTAŞ Dock information

Dock	Length	Width	Depth	İno
1	136m	25m	7-14m	D-C-RORO-BL
2	228m	25m	14-18m	D-GC-SY
3	218m	25m	12-18m	D-GC-SY
4	216m	25m	6-12m	D-GC-RORO
5	200m	40m	4-7m	D-GC
6	106m	50m	4-10m	D-GC-RORO
7	170m	30m	10-18m	D-GC-RORO
8	230m	30m	6-18m	D-GC-RORO

D: dock, BL: bulk liquid, C: container GC: general container

Aegean Sea

Black Sea





ÇEBİ DEPOLAMA

The Çebi Warehouse that is located next to the Martaş Port encompasses an area of 22.000 m². Comprising three independent sections, the facility provides services through its 32.500 m³ covered area, 50.000 m³ open storage area, as well as 8 silos with a total capacity of 3.000 m³.



Advantageous storage services next to the port





ÇEBİ TRANS



On the roads, night&day, summer&winter

Incorporated in 1983, Çebi Trans provides land transportation services, particularly to the Kaptan Group, as well as to third parties with its own strong fleet.

The fleet containing side-tippers, trucks with extended trailers, flatbed trailers, etc., provides services to any location in Turkey at any time, enabling and offering numerous options and services to all of its customers.

Çebi Trans ensures customer satisfaction by delivering cargoes in a timely manner (*safely and as ordered*); holding SRC and Psychotechnic licenses (*owing to its professional, trained drivers*); and effectively used vehicle tracking system that allows it to maintain its perfect reputation and time management.





MARTAŞ RO-RO



Uninterrupted intermodal transportation

Providing services with RO-RO vessels in the Marmara Ereğli, Martaş RO-RO has the shortest distance in the North-South line in the Sea of Marmara. The company provides effective intermodal transport services with its location near the Çorlu-Çerkezköy industrial zone and 3rd bridge access roads.

Martaş RO-RO shortens long distances by carrying trucks and trailers on board its RO-RO vessels, providing time and fuel savings that are needed not only by customers but also by the entire world to maintain sustainability.





NUR GEMİCİLİK, ÇEBİ DENİZCİLİK,

To all ports in the
world, safely...



TAYFUN GEMİ İŞLETMECİLİĞİ, ÇEBİ GEMİ İŞLETMECİLİĞİ

Kaptan Group provides services as a shipping agent, broker, shipping, and operator in the maritime industry through its companies. All vessels owned by the Group have been operated by its Çebi Shipping Company since 1992.

Established in 2006, Nur Shipping, providing chartering and ship brokerage services, handles approximately 2.500.000 tons of steel-iron cargoes on an annual basis, acting as an operator in transportation for all import and export cargoes for the Group. The company also acts as a broker for vessels and cargoes owned and operated by the Group and for third party vessels.

Acting as an agency at ports, particularly at the Martaş Port, and Turkish Straits for vessels using the Turkish ports and Straits, Nur Shipping also provides brokerage services for vessels and cargoes owned and operated by the Group, and for third party vessels and cargoes.





ÇEBİ ENERJİ



The Indispensable element *of quality of life*: Energy

Kaptan Group made its first investment in the production of energy, one of the basic needs of our country and the globe, let alone the remarkably region where Turkey is at par, as a remarkable energy-rich soil, with Çebi Energy in 2003. The company is capable of generating uninterrupted, high quality, economic electrical power of 550.000.000 kWh on annual basis at its 64 MW natural gas combined cycle plant.

In addition to the existing plant, the Group aims to increase its energy production capacity and has received a positive environmental impact assessment report for the coal-fired thermal power plant with 2x350 MW installed power capacity, planned to be built in the Marmara Ereğli town of the Tekirdağ Province. The licensing and project processes are currently underway in preparation for putting forth the most appropriate and implementable execution.



ASET MADENCİLİK, DAMLA MADENCİLİK

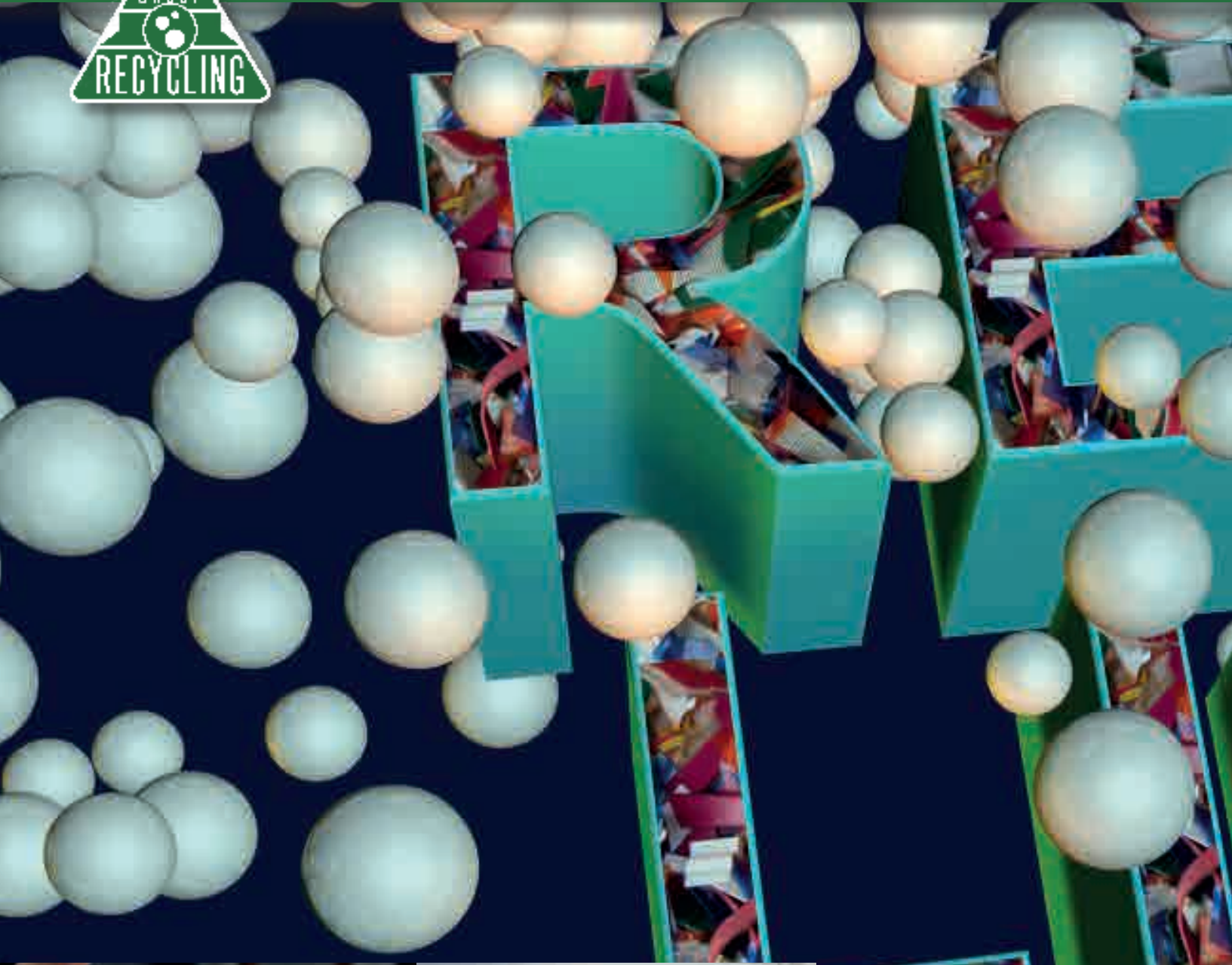


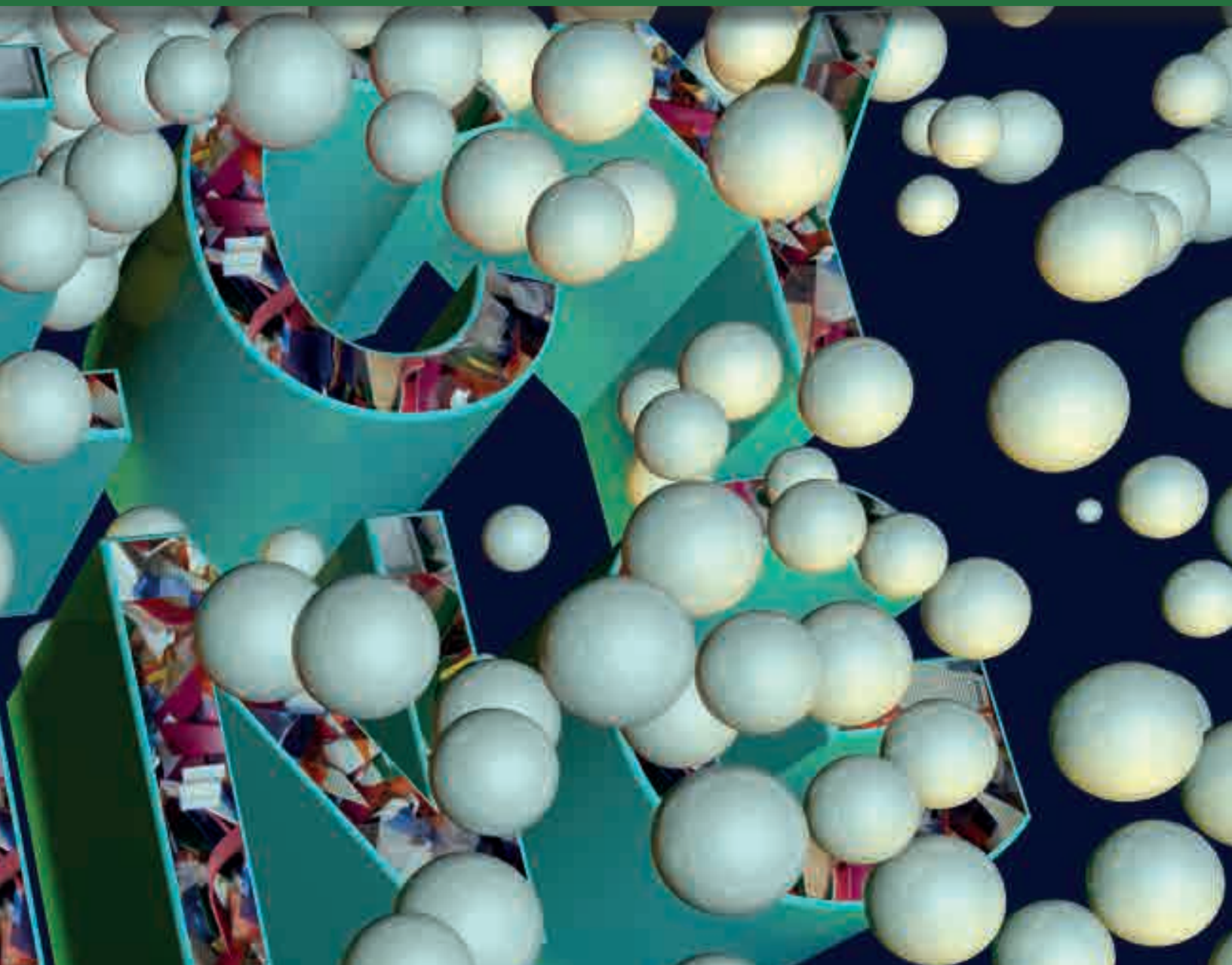
High-carbon stone-coal for the steel&iron industry

Aset Mining and Damla Mining are the companies of the Kaptan Group providing services in importation, storage, and packaging of mining products.

The Aset facilities, located in Sultanköy village in Marmara Ereğli region, process imported stone coal, subjecting it to breaking, sifting, and drying processes and supplying the high-carbon stone coal to the iron and steel industry. The facility has 1.000 m³ covered and 50,000 m³ open storage areas and encompasses a total facility area of 25.000 m².

KAPTAN GERİ DÖNÜŞÜM





Recycling: Within the changing order of the new world and considering our vision and mission, the Kaptan Recycling Company, incorporated in partnership with the Duth PTP Group, began its operations at its plant located within the Hayrabolu Organized Industrial Zone in 2014, to give back to nature and support the natural order.

The company manufactures granule raw materials for use in food packaging by recycling plastic waste that cannot be eliminated by nature, allowing for the reuse of the waste plastic material.



TRABZON ÇEBİ TERSANESİ



The first and only shipyard in the eastern black sea

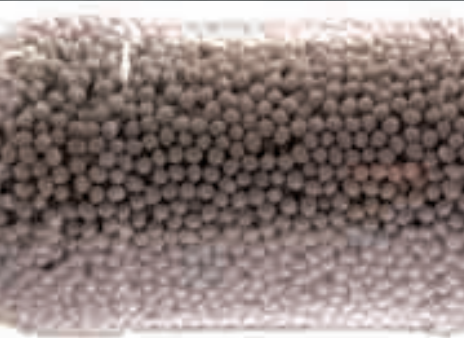
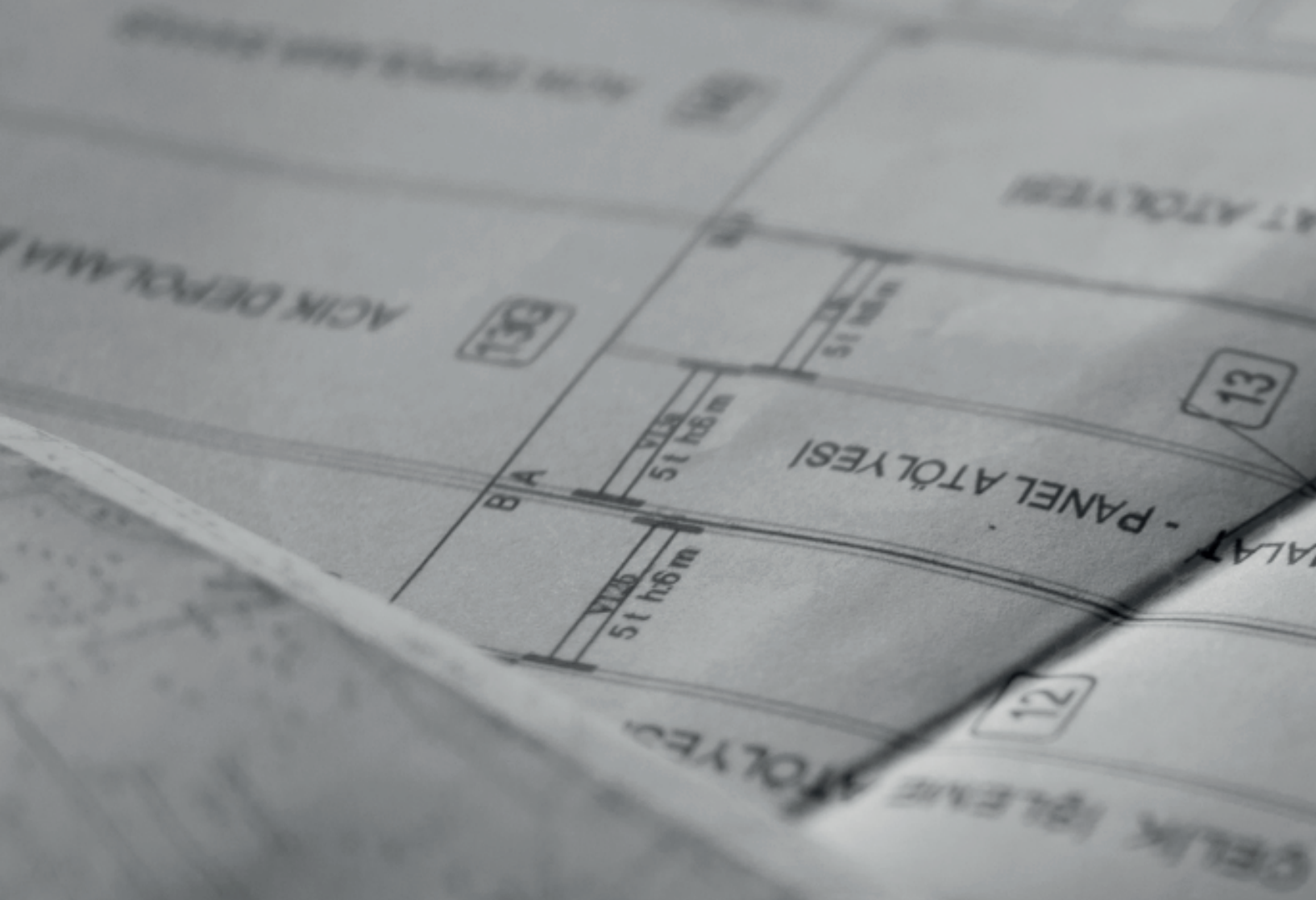
Trabzon Çebi Shipyard, owned by Nur Shipping, was established on an area of 336.000 m² in 2015 to provide vessel design, construction, and maintenance services in the Sürmene Town of the Trabzon Province.

The shipyard, designed to construct all kinds of vessels, including dry cargo vessels, liquid cargo vessels, chemical tankers, offshore vessels, tugboats, etc. has all the modern technological equipment required for shipbuilding.





Kaptan Group continues to grow with new investments





Shipyards

The shipyard investment that has been designated and implemented in 2015 is designed for easy capacity increase as needed and added development operations are underway.



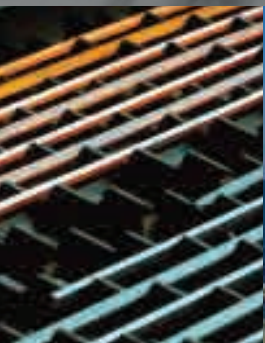
Real Estate

The real estate investment projects are implemented by Yasar Çebi Construction Company on the lands owned by the Kaptan Group. The company undertakes mainly residential buildings and hotel construction projects, and the development operations for a new project in the Kartal region are underway.



Energy

Another field of investment of the Group is the energy industry, which is an indispensable element for quality of life standards. In addition to the natural gas combined cycle power plant located in Marmara Ereğli region, project work has commenced for construction of a coal-fired thermal power plant.



KAPTAN GROUP contact information



KAPTAN DEMİR ÇELİK END. ve TİC. A.Ş. Headquarters info@kaptandemir.com.tr

KAPTAN METAL DIŞ TİCARET ve NAKLİYAT A.Ş. Headquarters export@kaptandemir.com.tr

ÇEBİ METAL SAN. VE TİC. A.Ş. Headquarters cebimetal@kaptandemir.com.tr

Fahrettin Kerim Gökay Cad. Bestekar Saadettin Kaynak Sk. No: 2
Altunizade, Üsküdar - İstanbul - TURKEY

Tel: +90 216 547 49 00 Pbx, Faks: +90 216 428 74 74 Pbx

KAPTAN DEMİR ÇELİK END. ve TİC. A.Ş. Marmara Ereğlisi Production Facilities

Ekşi Elma mevki, Seymen Yolu 4. km Marmara Ereğlisi, Tekirdağ - TURKEY

İzabe: +90 282 611 00 00 Pbx, Fax: +90 282 633 78 27

KAPTAN DEMİR ÇELİK END. ve TİC. A.Ş. Çorlu Rolling Mill

Misinli Belediye Kavşağı, Asfaltaltı mevki, Çorlu, Tekirdağ - TURKEY

Tel: +90 282 675 13 13 Pbx, Faks: +90 282 675 13 24

KAPTAN DEMİR ÇELİK END. ve TİC. A.Ş. Karabük Rolling Mill

Hürriyet Cad. No: 29A Karabük - TURKEY

Tel: +90 370 415 47 00 Pbx, Faks: +90 415 47 05-08



KAPTAN ASET MADENCİLİK A.Ş. Headquarters

Fahrettin Kerim Gökay Cad. Bestekar Saadettin Kaynak Sk. No: 2
Altunizade, Üsküdar - İstanbul - TURKEY

Tel: +90 216 547 49 00 Pbx, Faks: +90 216 428 74 74 Pbx

aset@kaptandemir.com.tr

KAPTAN ASET MADENCİLİK A.Ş. Sultanköy Facilities

Sultanköy Beldesi Marmara Ereğlisi, Tekirdağ - TURKEY

Tel: +90 282 633 78 35 Faks: +90 282 633 78 27



MARTAŞ MARMARA EREĞLİSİ LİMAN TESİSLERİ A.Ş. Headquarters
MARTAŞ RO-RO DENİZCİLİK VE TİCARET A.Ş. Headquarters martasroro@martasroro.com.tr
ÇEBİ TRANS ve LOJİSTİK TİC A.Ş. Headquarters cebitransport@kaptandemir.com.tr
ÇEBİ DEPOLAMA ve TİCARET A.Ş. Headquarters
Fahrettin Kerim Gökay Cad. Bestekar Saadettin Kaynak Sk. No: 2
Altunizade, Üsküdar - İstanbul - TURKEY
Tel: +90 216 428 50 40 - 6 hat, Faks: +90 216 428 50 47/49

MARTAŞ MARMARA EREĞLİSİ LİMAN TESİSLERİ A.Ş. Port
Bahçelievler mah Limanyolu Cad No: 19/A Marmara Ereğlisi - Tekirdağ - TURKEY
Tel: +90 282 613 18 79 Pbx, Faks: +90 282 613 18 51
info@martasport.com

ÇEBİ DEPO DEPOLAMA ve TİCARET A.Ş. Marmara Ereğlisi, Warehouse
Bahçelievler mah Limanyolu Cad No: 9/A Marmara Ereğlisi - Tekirdağ - TURKEY
Tel: +90 282 613 18 79 Pbx, Faks: +90 282 613 18 51
info@martasport.com

MARTAŞ RO-RO DENİZCİLİK ve TİCARET A.Ş. Marmara Ereğlisi, Office
Kiremitlik mevkii, Vakıflar Kampı Yanı, Marmara Ereğlisi, Tekirdağ - TURKEY
Tel: +90 282 613 38 38 Faks: +90 282 613 18 51
Rezervasyon Tel: +90 534 889 76 02
eregli.martasroro@martasroro.com.tr

MARTAŞ RO-RO DENİZCİLİK ve TİCARET A.Ş. Bandırma Office
Ayyıldız mahallesi Erdek Cad No: 60 Bandırma - Balıkesir - TURKEY
Tel: +90 266 738 05 66
Rezervasyon Tel: +90 534 889 75 69
bandirma.martasroro@martasroro.com.tr

ÇEBİ TRANS ve LOJİSTİK TİC A.Ş. Marmara Ereğlisi
Ceditlipaşa mah Seymen yolu üzeri 4. km Marmara Ereğlisi - Tekirdağ - TURKEY
Marmara Ereğlisi - Tekirdağ - TURKEY
Tel: +90 282 611 00 00 Pbx, Faks: +90 282 611 00 93

ÇEBİ TRANS ve LOJİSTİK TİC A.Ş. Bartın
Karasu Köyü Boğaz mevki Bartın - Karabük - TURKEY
Tel: +90 378 238 55 99

KAPTAN GROUP contact information



ÇEBİ DENİZCİLİK ve TİCARET A.Ş. Headquarters agency@nurship.com

NUR GEMİCİLİK ve TİCARET A.Ş. Headquarters nurship@nurship.com

TAYFUN GEMİ İŞLETMECİLİĞİ ve TİCARET A.Ş. Headquarters

ÇEBİ GEMİ İŞLETMECİLİĞİ ve TİCARET A.Ş. Headquarters

Fahrettin Kerim Gökay Cad. Bestekar Saadettin Kaynak Sk. No: 2

Altunizade, Üsküdar, İstanbul - TURKEY

Tel: +90 216 428 50 40 - 6 hat, Faks: +90 216 428 50 47/49

NUR GEMİCİLİK VE TİCARET A.Ş. Martaş Liman Facilities

Bahçelievler Mah. Liman Yolu Cad. No: 19/A Marmara Ereğlisi Tekirdağ - TURKEY

TEL: +90 282 613 33 50 Faks:+90 0282 613 33 50



TRABZON ÇEBİ TERSANESİ Headquarters info@cebitersanesi.com

Fahrettin Kerim Gökay Cad. Bestekar Saadettin Kaynak Sk. No: 2

Altunizade, Üsküdar - İstanbul - TURKEY

Tel: +90 216 547 49 00 Pbx, Faks: +90 216 428 74 74 Pbx

TRABZON ÇEBİ TERSANESİ Trabzon

Yeniay Mah. Liman Cad. No: 14 A D. A Sürmele Trabzon - TURKEY

Tel: +90 462 752 26 52



KAPTAN GERİ DÖNÜŞÜM TEKNOLOJİLERİ A.Ş. Headquarters
Fahrettin Kerim Gökay Cad. Bestekar Saadettin Kaynak Sk. No: 2
Altunizade, Üsküdar - İstanbul - TURKEY
Tel: +90 216 547 49 00 Pbx, Faks: +90 216 428 74 74 Pbx

KAPTAN GERİ DÖNÜŞÜM TEKNOLOJİLERİ A.Ş. Hayrabolu Production Facilities
Orbanize Sanayi Bölgesi, Aydın Sok. No: 3 7. Blok
Hayrabolu - Tekirdağ - TURKEY
Tel: +90 282 315 48 48



ÇEBİ ENERJİ ELEKTRİK ÜRETİMİ A.Ş. Headquarters cebienerji@cebienerji.com.tr
Fahrettin Kerim Gökay Cad. Bestekar Saadettin Kaynak Sk. No: 2
Altunizade, Üsküdar - İstanbul - TURKEY
Tel: +90 216 547 49 00 Pbx, Faks: +90 216 428 74 74 Pbx

ÇEBİ ENERJİ ELEKTRİK ÜRETİMİ A.Ş. Marmara Ereğlisi Production Facilities
Seymen Yolu 4. Km Marmara Ereğlisi - Tekirdağ - TURKEY
Tel: +90 282 611 00 00



KAPTAN YATIRIM
Fahrettin Kerim Gökay Cad. Bestekar Saadettin Kaynak Sk. No: 2
Altunizade, Üsküdar - İstanbul - TURKEY
Tel: +90 216 547 49 00 Pbx, Faks: +90 216 428 74 74 Pbx





Timely and high quality services

1964



KAPTAN
GROUP
T U R K E Y

1964



**KAPTAN
GROUP**
TURKEY

